

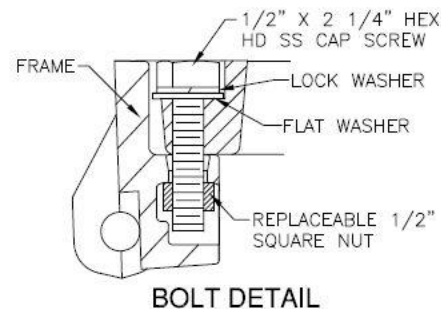
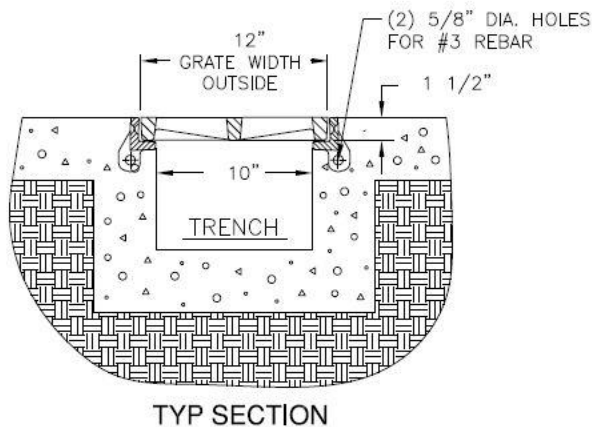
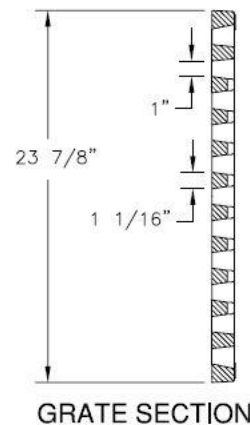
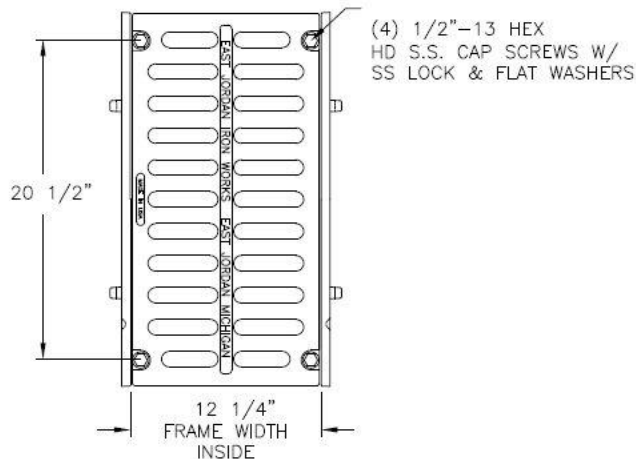
1-877-903-7246



www.trenchdrainsupply.com

Number	Series
6953M2-Bolted	6950 Series Trench Drain Frame and Grate Bolted Heavy Duty

6950 6953 Assembly



CAUTION: CHECK TRENCH RAIL AND GRATE
BEFORE FINALIZING INSTALLATION. BE
CAUTIOUS IN LINING UP ADJACENT ASSEMBLIES

CAUTION: DO NOT DISASSEMBLE BOLTED
GRATES AND CHECK FRAME WIDTH INSIDE
BEFORE SETTING SECTIONS IN CONCRETE.

Specification

Manufacturer



Grate Material : Gray Iron (CL35)
Design Load: Heavy Duty
Coating: Undipped
Open Area: 90 SQ IN
Certification: ASTM A48
Country of Origin: USA

DISCLAIMER - The customer and the customer's architects, engineers, consultants, and other professionals are completely responsible for the selection installation and maintenance of any product purchased from Trench Drain Supply and/or its manufacturers. TRENCH DRAIN SUPPLY MAKES NO WARRANTY, EXPRESS OR IMPLIED, AS TO THE SUITABILITY, DESIGN, MERCHANTABILITY, OR FITNESS OF THE PRODUCT FOR CUSTOMERS APPLICATION. The drawing and information provided remain the property and copyright of the manufacturer listed. The manufacturer reserves the right to modify specification without notice.